

Digm access guide

Updated: July 18, 2007

| | |
|-------------------------------------|---|
| About the servers | 1 |
| On Campus Access: | 1 |
| Off campus access: | 1 |
| Mac Off Campus Access: | 3 |

About the servers

DIGM has three network attached storage devices:

- DigmFiles.comad.drexel.edu/files which has 436GB available for storage
- DigmStorage.comad.drexel.edu/storage which has 316GB available for storage
- DigmVault.comad.drexel.edu/digmgrad which has 436GB for graduate students only

On Campus Access:

Accessing the storage spaces:

DigmFiles and DigmStorage are automatically mounted in all DIGM labs and are available via My Computer as network drives. DigmVault is only automatically mounted in the DIGM Graduate Lab (room 018).

Off campus access:

1. To access these storage spaces from off campus, you must first launch a SFTP client.
 - If you do not have a SFTP client you need to download SSH from Drexel's software site and use that as a SFTP client from here <https://software.drexel.edu/Students/PCSoftware/SSH/SSHSecureS.exe> (In the prompt that comes up, put in "drexel\
2. Once your SSH client is open, you need to click the "New File Transfer Wizard" button.



3. You then need to connect, by clicking Quick Connect.
 - a. For the Host Name enter the fully quantified host name (digmstorage.comad.drexel.edu, digmfiles.comad.drexel.edu, or digmvault.comad.drexel.edu)
 - b. Enter your student username, prefaced with "drexel\"
 - c. Enter "22" for the port number

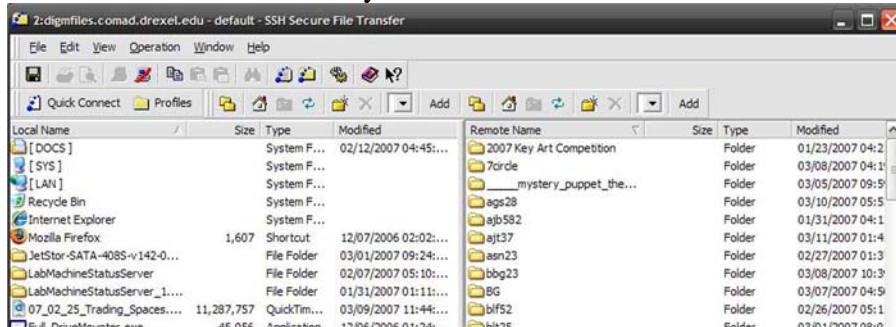
- d. Click “Connect”



3. Once you connect, you will receive a prompt that tells you that access has failed, you can ignore this and simply press “ok”.



4. This is what it will look like if you have been successful:



Mac Off Campus Access:

1. Use your computer's browser to navigate to <https://software.drexel.edu>
2. Navigate to the Students/MacintoshSoftware/Fetch/ folder
3. Download the "Fetch_5.0.4.dmg" file
4. Open the file from your browser's download manager and follow the on-screen instructions to install the application (drag it into your applications folder)
5. Open Fetch, go to File → New Connection
6. Input the following (without quotes):
Hostname: "digmfiles.comad.drexel.edu"
Username: "drexel\<>your Drexel username>"
Under the "*Connect using:*" drop-down, select "SFTP"
Password: "<your Drexel password>"
7. Click "Connect" and the server should load up within Fetch